



Feature

- Low Cost
- Compact Design
- Compression Type
- Protection Class IP66
- Nickel Plated Steel
- Braided Shield 4-Wire Round Cable

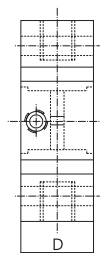
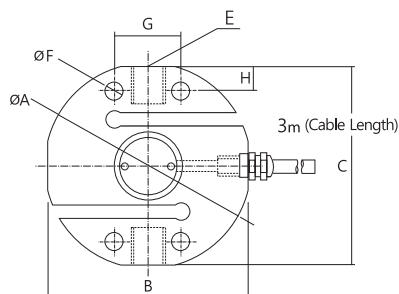
Option

- Stainless - LS300
- Aluminium - AS300



Rated Capacity (R.C)	kgf / tf	50 , 100 , 150 , 200 , 250 , 300 , 500 kgf , 1 , 2 , 3 , 5 , 10tf
Rated Output (R.O)	mV / V	2,0 ± 0,005
Zero Balance	mV / V	0 ± 0,02
Combined Error	%	0,03
Repeatability	%	0,01
Creep (30min.)	%	0,03
Temperature Effect on		
Zero Value	% / 10°C	0,03
Output Value	% / 10°C	0,02
Excitation		
Recommended	V	10
Maximum	V	15
Resistance		
Input	Ω	400 ± 30
Output	Ω	350 ± 3,5
Insulation	MΩ	> 2000
Compensated Temp Range	°C	-10 ~ +40
Operating Temp Range	°C	-30 ~ +80

Model	Capacity	ØA	B	C	D	E	ØF	G	H
SS300-50kgf	50kgf	80	4	76	19	M12x1,75	—	—	—
SS300-100kgf	100kgf								
SS300-150kgf	150kgf	80	74	76	26		—	—	—
SS300-200kgf	200kgf								
SS300-300kgf	300kgf	80	74	76	26	M18x1,5	—	—	—
SS300-500kgf	500kgf								
SS300-1tf	1tf	115	90	110	30	M20x1,5	—	—	—
SS300-2tf	2tf								
SS300-3tf	3tf	125	123	120	36	M24x2,0	13	42	18
SS300-5tf	5tf	175	172	168	50	M30x2,0	21	64	29
SS300-10tf	10tf								



Unit : mm

CABLE	COLOR CODE
EXC +	(RED)
EXC -	(WHITE)
SIG +	(GREEN)
SIG -	(BLUE, BLACK)
SHLD	(YELLOW)