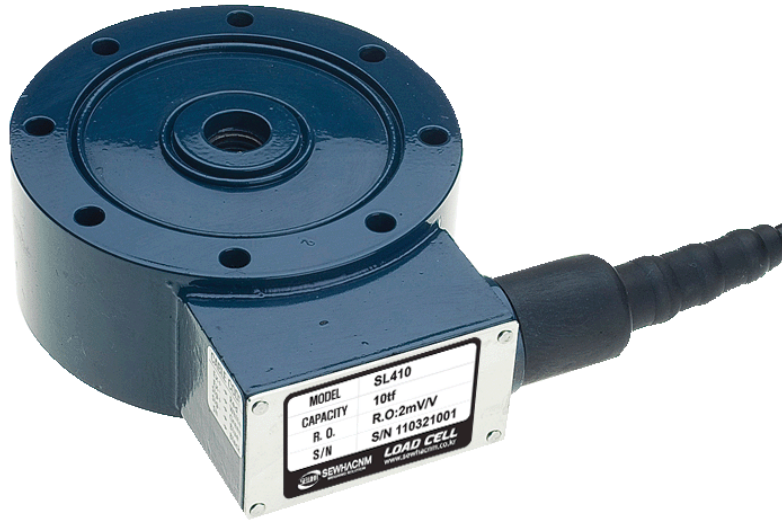


SL410 Explosion Proof type

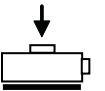
Low Profile/Pan Cake Load Cell 1,2,3,5,10,20,30,50,100,200tf

PRODUCT



Feature

- Hermetically Sealed
- High Reliability Against Fatigue & Force
- Fully Environmental Protection IP67
- Paint Finished Steel
- Braided Shield 4-Wire Round Cable

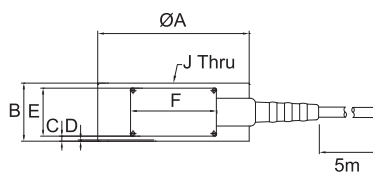
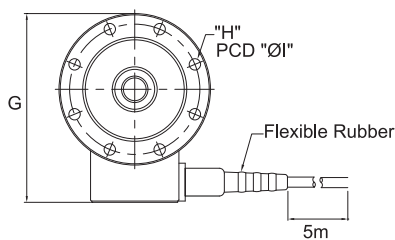


SPECIFICATION

Rated Capacity (R.C)	tf	1, 2, 3, 5, 10, 20, 30, 50, 100, 200 tf	
Rated Output (R.O)	mV/V	2.0±0.005	
Zero Balance	mV/V	0.0±0.02	
Accuracy Class		A	B
Combined Error	%	0.02	0.05
Repeatability	%	0.01	0.02
Creep (30min.)	%	0.03	0.03
Temperature Effect On			
Zero Value	% / 10°C	0.03	0.03
Output Value	% / 10°C	0.03	0.03
Excitation			
Recommended	V	10	
Maximum	V	15	
Resistance			
Input	Ω	350±3.5	
Output	Ω	350±3.5	
Insulation	MΩ	>2,000@50V DC	
Compensated Temperature Range	°C	-10 ~ +40	
Operating Temperature Range	°C	-20 ~ +80	

DIMENSION

Model	Capacity	A	B	C	D	E	F	G	H	I	J
SL410-1tf	1tf	110	46	4	1	38	68	139.5	8-Ø6.6	97.2	M16X2.0
SL410-2tf	2tf										
SL410-3tf	3tf										
SL410-5tf	5tf	120	46	4	1	38	68	149.5	8-Ø9	103.2	M18X1.5
SL410-10tf	10tf	138	60	11				167.5	8-Ø11	117.6	M24X2.0
SL410-20/30tf	20/30tf	184	80	21				213.5	8-Ø14	157.6	M39X2.0
SL410-50tf	50tf	200	60	11				229.5	12-Ø14.3	170	M45X3.0
SL410-100tf	100tf	278	90	26				307.5	16-Ø16.3	229	M70X3.0
SL410-200tf	200tf	335	108	35				384.5	12-Ø26	298	M90X3.0



Unit : mm

CABLE	COLOR CODE
EXC +	(RED)
EXC -	(WHITE)
SIG +	(GREEN)
SIG -	(BLUE, BLACK)
SHLD	(YELLOW)